

USB2.0 NAS Dongle User's Manual

1.0 Product overview

Thank you for purchasing USB2.0 NAS Dongle storage device. Now you can easily add USB2.0 Storage into your network. Before using this device, please read the Key Features below.

Key Features

- Support USB mass storage device
- Support Auto IP (DHCP server or DHCP Client)/ Fixed IP
- Under network environment, it supports one 10/100Mbps Ethernet port
- Password management provides secure access to HDD and web management
- Support Samba/FTP server
- Support Bit Torrent download server
- Support XBOX360 media & Apple i-Tunes music server
- Support USB Printer server
- Compatible with Windows 2000/XP/VISTA, Mac 10.5.4 above

NAS Dongle is a flexible, economical and powerful unit for your network. Follow the instructions to help you connect, set it up, and configure it.

Network environment

There are 3 different setup conditions you can choose:

- Setup NAS Dongle as DHCP Client:

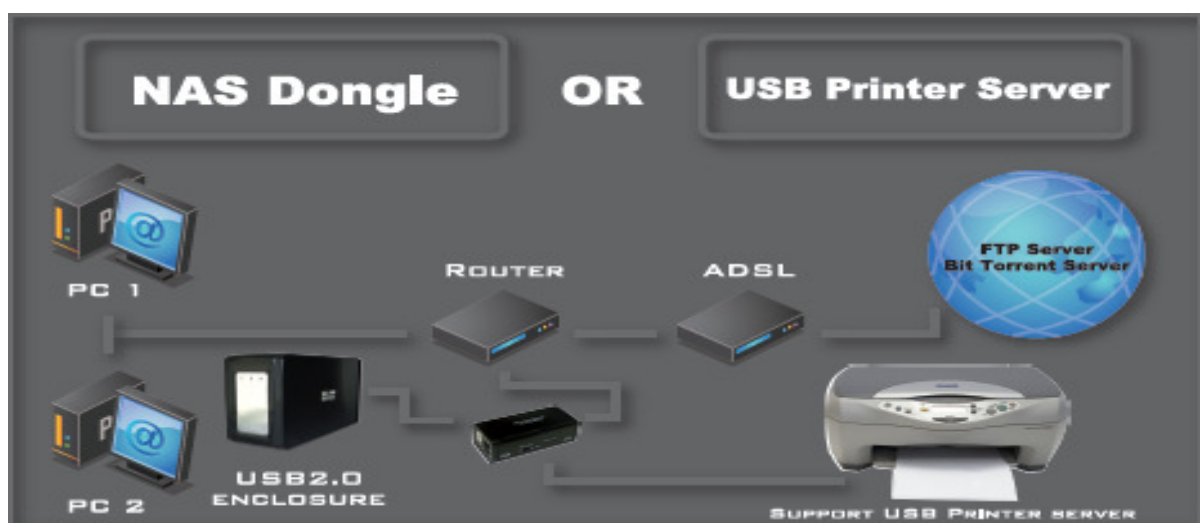
If your NAS Dongle operates under a built-in DHCP server router (ex. Internet Sharing Hub), it will obtain an IP from DHCP Server automatically.

- Setup NAS Dongle as DHCP Server:

If your operating environment does not support DHCP server, NAS Dongle will immediately act as DHCP server and assign an IP for installation.

- In Static IP environment:

You need first configure the IP for NAS Dongle to operate in the static IP environment. For configuring details, please refer to "IP Config" setup page.

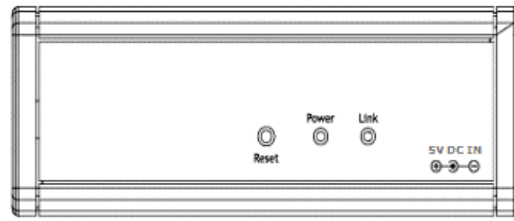
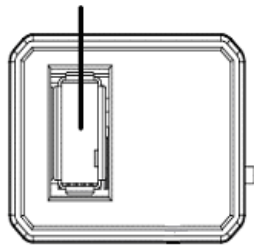


2.0 NAS Dongle Hardware installation

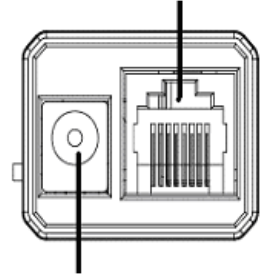
If you connect NAS Dongle to your computer directly, make sure to obtain the IP address and DNS settings automatically, otherwise you may not be able to find the device.

- Connect USB mass storage into USB port
- Connect LAN cable via LAN switch or Router.
- Connect 5V power adapter to power up.

Connect USB Cable to USB device.



Connect LAN cable to LAN Switch or Router



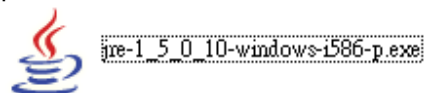
Connect to 5V power adapter

3.0 Search NAS Dongle by Utility

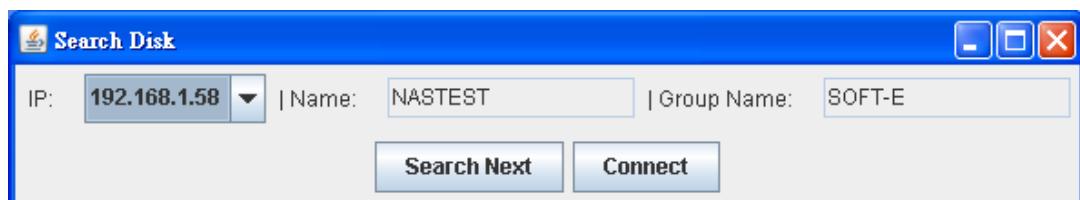
1. Browse the CD enclosed in the product package, copy and paste "**SDisk Utility**" into your computer. Double click the icon to start search.



Note: "**SDisk utility**" was written in JAVA, please make sure you have installed the JAVA runtime environment on your computer before. If not, please install it from the CD.



2. When NAS Dongle is found, click "**Connect**" to enter configurations.

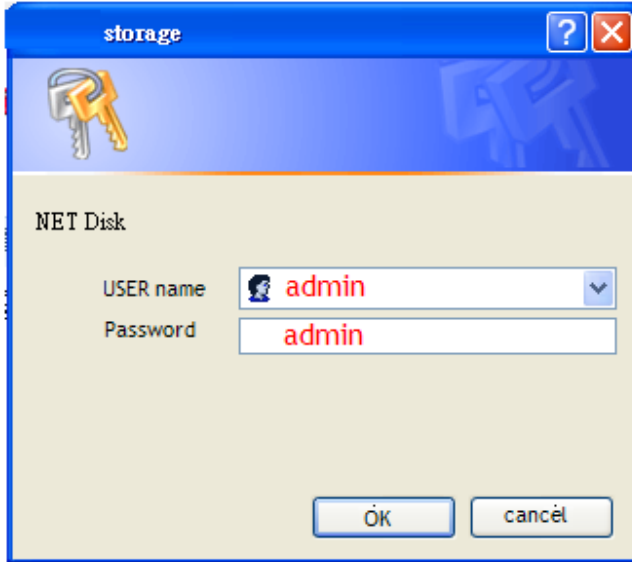


3.1 Search NAS Dongle by using Internet explorer.

1. Open IE and type default host name "**storage**" in the search bar.

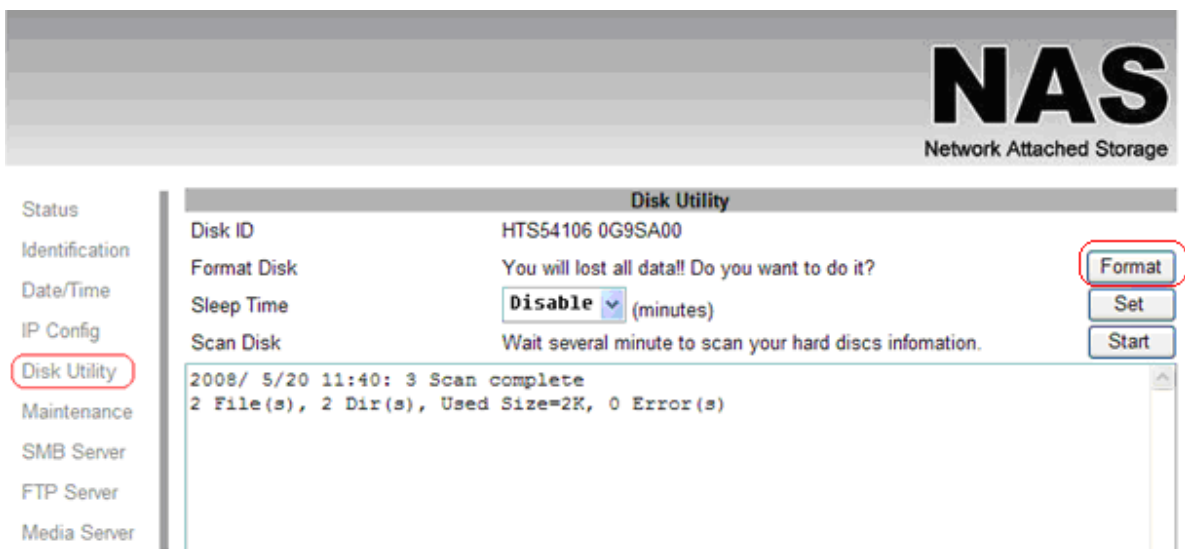


2. Default login is **"admin"** for both user name and password, click **"OK"** to enter configurations.



3.2 Hard Disk format

For the first time installation, you need to format hard disk into **FAT32** system file, this procedure applies to either new or used hard disk.



4.0 Status

Provide the basic information for NAS Dongle.

Status		
Identification		
Date/Time		
IP Config		
Disk Utility		
Maintenance		
SMB Server		
FTP Server		
Media Server		
	Identification	
	Host Name	STORAGE-000B
	Group Name	WORKGROUP
	Administrator	admin
	Date and Time	
	Date	2008/05/20 16:52:28 GMT8
	Disk Usage & Firmware	
	Firmware Version	CR1618-1.11 LOADER 3.3
	Free Size	57209 MB free
	Total Size	57231 MB

4.1 Identification

You can change and modify your host & group name, and password from this page. Click "**Apply**" to save the setting.

- **Host name:** This is used to identify your device on the network. If you prefer a different name, type in the new name and click "**Apply**" to save setting.

- **Group Name:** This should be same as your workgroup. In general, the default "**WORKGROUP**" will be OK. But if your workstation belongs to different workgroup, type in the correct group name to modify.

In Window O/S, right click on "**My computer**", choose "**Properties**", and go to the computer name tab to see your current workgroup.

For Mac O/S to join windows workgroup, open the directory access utility (under Applications-> utilities), select SMB and click configure to modify the settings (administrator access required to access this option.)

Note: we strongly suggest you to change the password as soon as you logged in, to prevent unauthorized access.

NAS

Network Attached Storage

<ul style="list-style-type: none"> Status <li style="border: 1px solid red; border-radius: 5px; padding: 2px;">Identification Date/Time IP Config Disk Utility Maintenance SMB Server FTP Server Media Server 	<div style="text-align: center; border-bottom: 1px solid gray; margin-bottom: 10px;">Identification</div> <p>Host Name <input type="text" value="STORAGE-000B"/></p> <p>Group Name <input type="text" value="WORKGROUP"/></p> <p style="color: red; font-size: small;">Note. First character can not be number (0~9). Note2. Host & Group name maximum is 15 bits.</p> <div style="text-align: right; margin-top: 10px;"><input type="button" value="Apply"/></div>
	<div style="text-align: center; border-bottom: 1px solid gray; margin-bottom: 10px;">Administration</div> <p>Administrator <input type="text" value="admin"/></p> <p>Password <input type="password"/></p> <p>Verify Password <input type="password"/></p> <p style="color: red; font-size: small;">Note3. password maximum is 20 bits.</p> <div style="text-align: right; margin-top: 10px;"><input type="button" value="Apply"/></div>

4.2 Date/ Time setting

You can change time setting from this page. Clicks "**Apply**" to save the setting. By default SNTP is in network time service, you can also select "Synchronize to PC". If internet access is available we recommended setting SNTP to Network time service instead.

NAS

Network Attached Storage

<ul style="list-style-type: none"> Status Identification <li style="border: 1px solid red; border-radius: 5px; padding: 2px;">Date/Time IP Config Disk Utility Maintenance SMB Server FTP Server Media Server 	<div style="text-align: center; border-bottom: 1px solid gray; margin-bottom: 10px;">Date and Time Config</div> <p>System's Date Tue May 20 16:50:42 UTC+0800 2008</p> <p>SNTP <input checked="" type="radio"/> Network Time Service <input type="radio"/> Synchronize to PC</p> <p>Time Server <input checked="" type="radio"/> <input type="text" value="clock.isc.org"/> <input type="button" value="v"/> <input type="radio"/> <input type="text"/></p> <div style="text-align: right; margin-top: 10px;"><input type="button" value="Apply"/></div>
--	--

4.3 IP Configuration

By default, the "IP config" is set to "Automatic IP". This is the recommended setting and will allow NAS Dongle to obtain its IP address automatically. If you prefer setting it manually, select the static IP option, enter your own value and click apply to confirm the new setting.

Setting it manually is useful when it often obtain a different IP address but you have a static IP address in order to mount the network drive or setup port forwarding as an example.

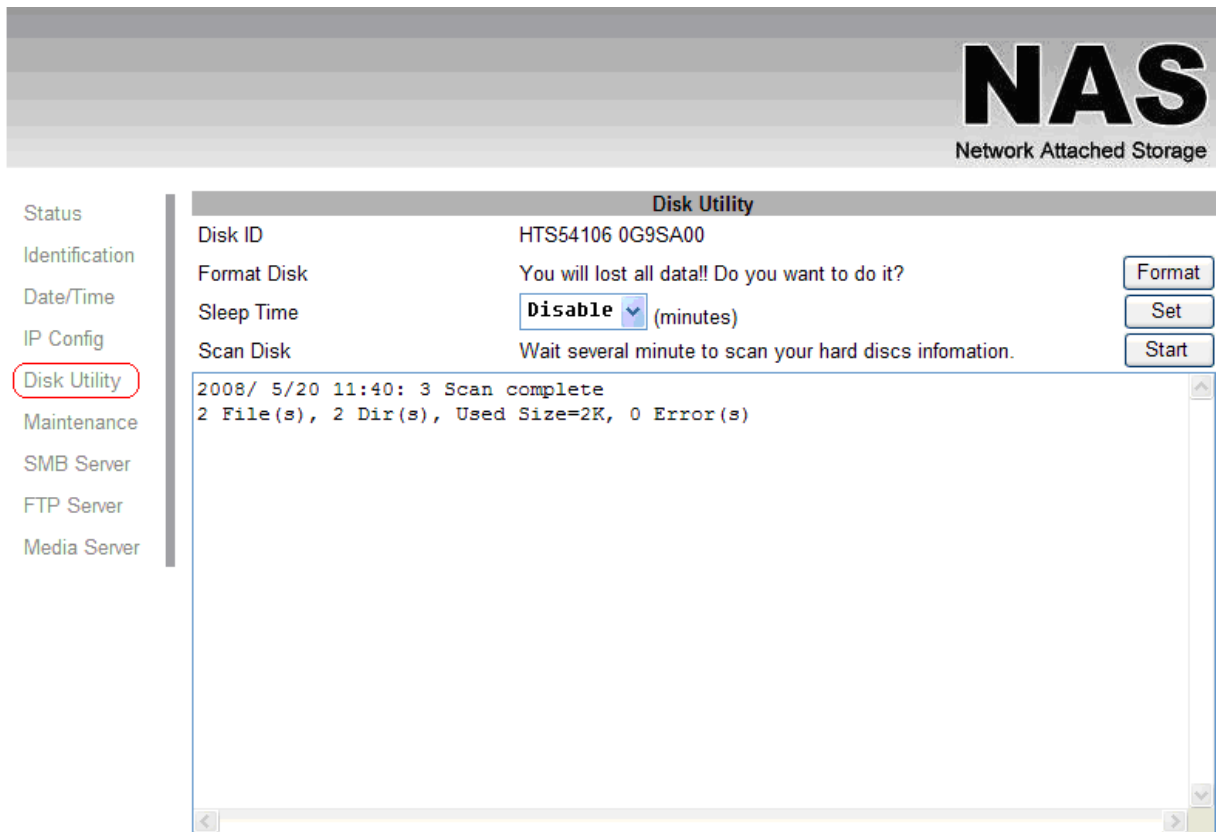
The screenshot shows the configuration page for a Network Attached Storage (NAS) device. The page has a header with the 'NAS' logo and 'Network Attached Storage' text. On the left is a navigation menu with items: Status, Identification, Date/Time, IP Config (highlighted with a red circle), Disk Utility, Maintenance, SMB Server, FTP Server, and Media Server. The main content area is divided into three sections:

- IP Config:** Contains radio buttons for 'Automatic IP' and 'Static IP as below' (selected). Below are input fields for IP (192.168.1.121), SubnetMask (255.255.255.0), Gateway (192.168.1.254), Primary DNS (168.95.192.1), and Secondary DNS (168.95.1.1). An 'Apply' button is on the right.
- DHCP Config:** Shows 'DHCP server' set to 'Off' with radio buttons for 'Enable' and 'Disable' (selected). An 'Apply' button is on the right.
- MAC address:** Shows 'MAC address' as '7A:B5:F6:00:00:0B'.

4.4 Disk Utility

In this page, you can manage the hard disk setting.

- **Format:** For the first time installation, you need to format hard disk into **FAT32** system file, this procedure applies to either new or used hard disk.
- **Sleep Time:** This is to select time frame to setup hard disk sleeping mode.
- **Scan Disk:** After the scan, it will show the number of file content and health status for the hard disk.



4.5 Maintenance

This page allows you to update NAS dongle firmware, to go back to default setting or to reboot NAS system.

- **Firmware update:** Follow the steps below to update the loader and firmware for NAS Dongle.

1. Obtain the latest firmware from your vendor.
2. Store the firmware file in your computer and decompress them if necessary.
3. Browse your system and locate the firmware (BIN file).
4. Click on "upload".
5. Confirm the pop-up message to start the update.
6. Wait and DO NOT click anywhere else or turn off the power! This might take a few minutes.
7. Once the update is done, it will prompt you to reboot the device.
8. Click on "reboot" to restart the device.
9. Wait for about one minute and then go to the status page to confirm the update is successful.

- **Factory defaults:** Forgot your admin password?? Click on factory and go back to default password setting.

- **System reboot:** This can be used to restart the network drive after a firmware update.

NAS

Network Attached Storage

- Status
- Identification
- Date/Time
- IP Config
- Disk Utility
- Maintenance
- SMB Server
- FTP Server
- Media Server

Firmware Upload

Select new firmware to update.

Factory Defaults

Click "Reset" to clear all configuration and restore to default settings.

System Reboot

Click "Reboot" to have the device perform a software restart.

5.0 SMB Server

SMB server allows you to share data or files through LAN environment. A default "guest" folder is created and shared to all from NAS Dongle.

Note: Use **ONLY English** alphabet for folder names and no special characters when creating new folders.

NAS

Network Attached Storage

- Status
- Identification
- Date/Time
- IP Config
- Disk Utility
- Maintenance
- SMB Server
- FTP Server
- Media Server

SMB Server

SMB Status ENABLE DISABLE

Account List

User Name	Password	Access	En / Disable
Guest	-----	RW	ENABLED

5.1 How to crate user.

Click on the **"Add"** button and type new account name and password and than **"OK"**.

Eg: "User1" for demonstrations.

SMB Add Account

Account Name

Password

Access Read Only Read/Write

Note. account name&password
maximus is 12 bits.

In the same time, NAS Dongle will also crate a SAMBA folder named "User1", click **"Modify"** to share the folder.

NAS

Network Attached Storage

Status

Identification

Date/Time

IP Config

Disk Utility

Maintenance

SMB Server

FTP Server

Media Server

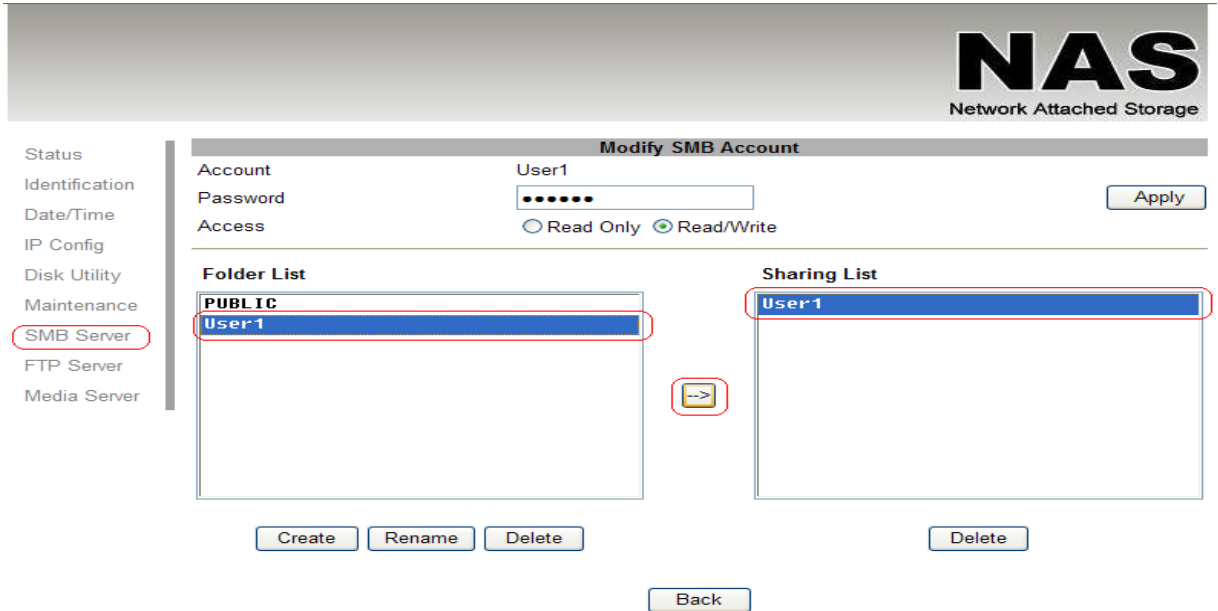
SMB Server

SMB Status ENABLE DISABLE

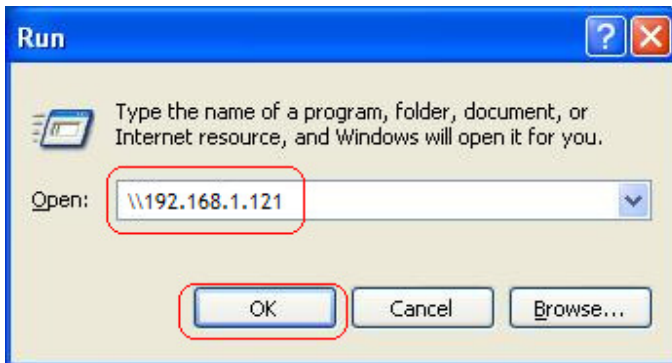
Account List

User Name	Password	Access	En / Disable
Guest	-----	RW	ENABLED
User1	*****	RW	ENABLED

Select "User1" and add in to "Sharing List".



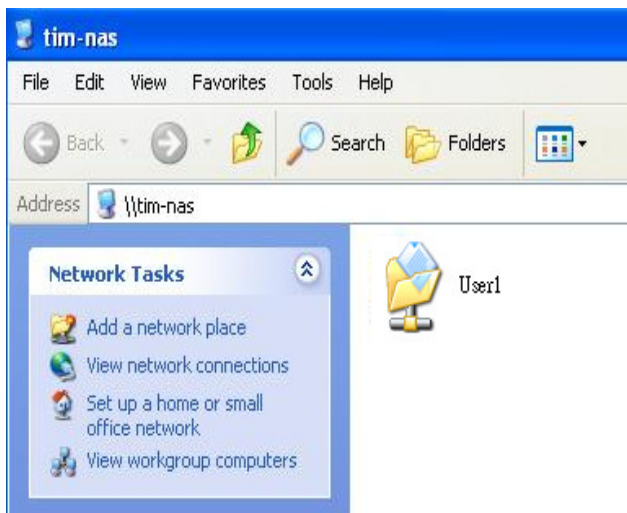
You can "Run" from window start button, type \\ follow by the IP address (eg: \\192.168.1.121), and click OK to continue.



Type "User1" and password to login.



Now you have set up the folder that you wish to share on your NAS Dongle. The shared folder can be accessed from other computer on your local network.



5.2 How to modify account password
Select the "User1" and then click "Modify".

- Status
- Identification
- Date/Time
- IP Config
- Disk Utility
- Maintenance
- SMB Server
- FTP Server
- Media Server

SMB Server

SMB Status ENABLE DISABLE

Account List

User Name	Password	Access	En / Disable
Guest	-----	RW	ENABLED
USER2	*****	RW	ENABLED
user3	*****	RW	ENABLED
userk	*****	RW	ENABLED
User1	*****	RW	ENABLED

Enter new password and click **Apply** to save setting.

- Status
- Identification
- Date/Time
- IP Config
- Disk Utility
- Maintenance
- SMB Server
- FTP Server
- Media Server

Modify SMB Account

Account: User1

Password:

Access: Read Only Read/Write

Folder List

- PUBLIC
- USER2
- user3
- userk
- User1

Sharing List

- User1
- PUBLIC

5.3 How to delete a SMB (SAMBA) account

Select an account you wish to delete, click **"Delete"** to proceed. Please note that all the data inside the folder will be lost after the delete.

- Status
- Identification
- Date/Time
- IP Config
- Disk Utility
- Maintenance
- SMB Server
- FTP Server
- Media Server

SMB Server

SMB Status: ENABLE DISABLE

Account List

User Name	Password	Access	En / Disable
Guest	-----	RW	ENABLED
USER2	*****	RW	ENABLED
user3	*****	RW	ENABLED
userk	*****	RW	ENABLED
User1	*****	RW	ENABLED

Microsoft Internet Explorer

? Selected account will be deleted!
Are you sure?

13

6.0 FTP Server

Remember to "Enable" the FTP service on the status page, when you plan on using the FTP server.

- FTP server Configuration: The standard port for FTP service is 21. If required, you can change it into any port ranging from 1025-6550. But in general, we recommended using the default port of 21.

File language support: By default, the encoding is set to English. If you want to store or transfer files with a different encoding (different language), choose the corresponding language for the drop down list. **In order to transfer and view the files correctly, it is important that you select the correct language!**

Anonymous: By default an anonymous user name has been created, it allows FTP users to login without username and password. For security reasons, it is best to add a password!.

Note: to be able to share FTP resource via internet, you need a router to assign the external IP to your NAS Dongle. Contact your router vendor on how to assign the external IP.

The screenshot shows the NAS (Network Attached Storage) management interface. The top right corner features the 'NAS' logo and the text 'Network Attached Storage'. On the left, a navigation menu includes 'Status', 'Identification', 'Date/Time', 'IP Config', 'Disk Utility', 'Maintenance', 'SMB Server', 'FTP Server' (highlighted with a red circle), and 'Media Server'. The main content area is titled 'FTP Configuration' and contains the following settings:

- FTP Status: ENABLE DISABLE (with 'ENABLE' circled in red)
- Port: 21
- File Language support: Traditional Chinese (cp950) (with a dropdown arrow)

Below these settings are three 'Apply' buttons and one 'Change' button. A note states: 'Note. Port set either from 1025 to 65500 or 21.' Below the configuration section is an 'Account List' table:

User Name	Password	Access	En / Disable
anonymous	-----	RO	ENABLED
rick	*****	RW	ENABLED

At the bottom of the interface, there are four buttons: 'Add', 'Modify', 'Delete', and 'En/Disable'.

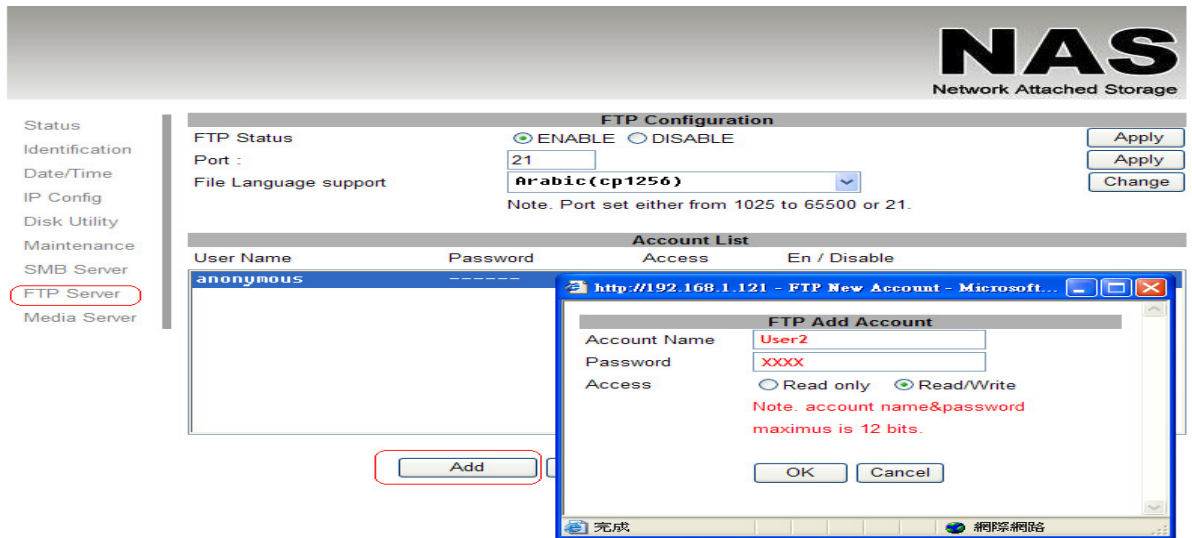
6.1 How to create FTP account

FTP server allows you to share your data through internet, so an internet resource and router is required before setting up FTP server.

Select FTP server and click "add" button and enter a name and password for the new FTP account and click "OK". to continue.

In the account list, you can see an overview of the existing accounts and status. For FTP file transfers, we recommend to use other dedicated FTP client software e.g.: SyncQuick FTP, Cute FTP etc.

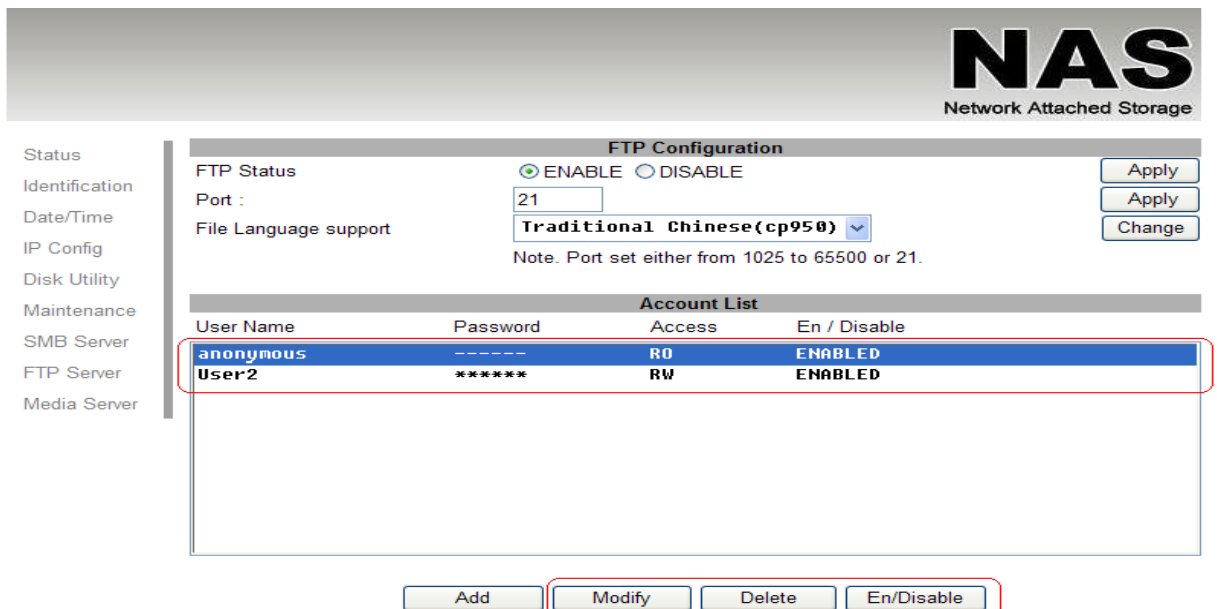
Note: When creating FTP accounts, please use ONLY English alphabet and no special character or space for FTP account name.



6.2 How to delete FTP account

In the "Account List", you can see an overview of the existing account and status; you can change them at any time by selecting the account and modifying, disabling or deleting it.

Note: Deleting a folder will also erase all the files on the hard drive that are stored inside that folder.

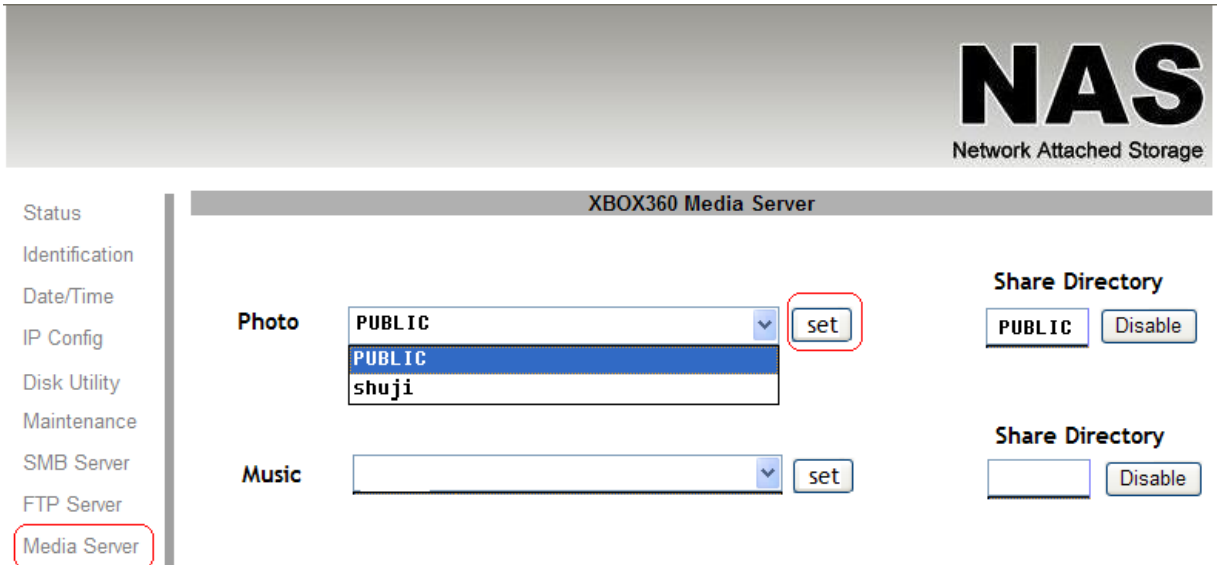


7.0 XBOX 360 UPnP Media server

The Media server on NAS Dongle can be used to share your photo and music files with a XBOX360 video game console from Microsoft that is connected to the same local network.

Before you start, make sure both devices are connected to the same local network and turned on.

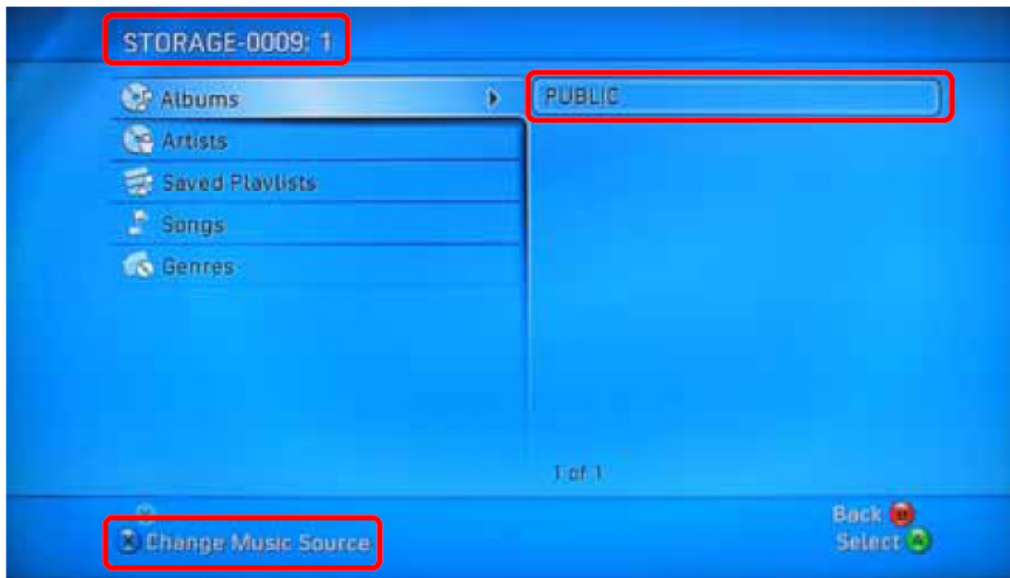
On your NAS Dongle, go to the XBOX360 media page and make sure photo and are set to share folder and not disable, e.g. the **"PUBLIC"** is enabled Photo directory.



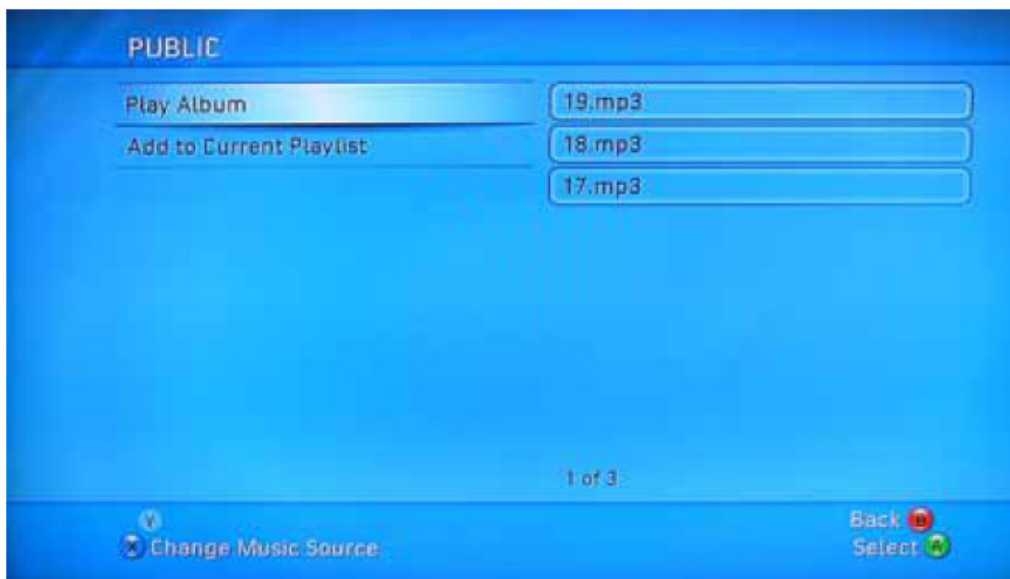
Go to media, select either Music or Pictures, and press **A** to continue on your XBOX 360.



Press **X** to change the source and select your network drive, it should show up as storage-xxx and display the folder that you have set up earlier on your NAS Dongle.

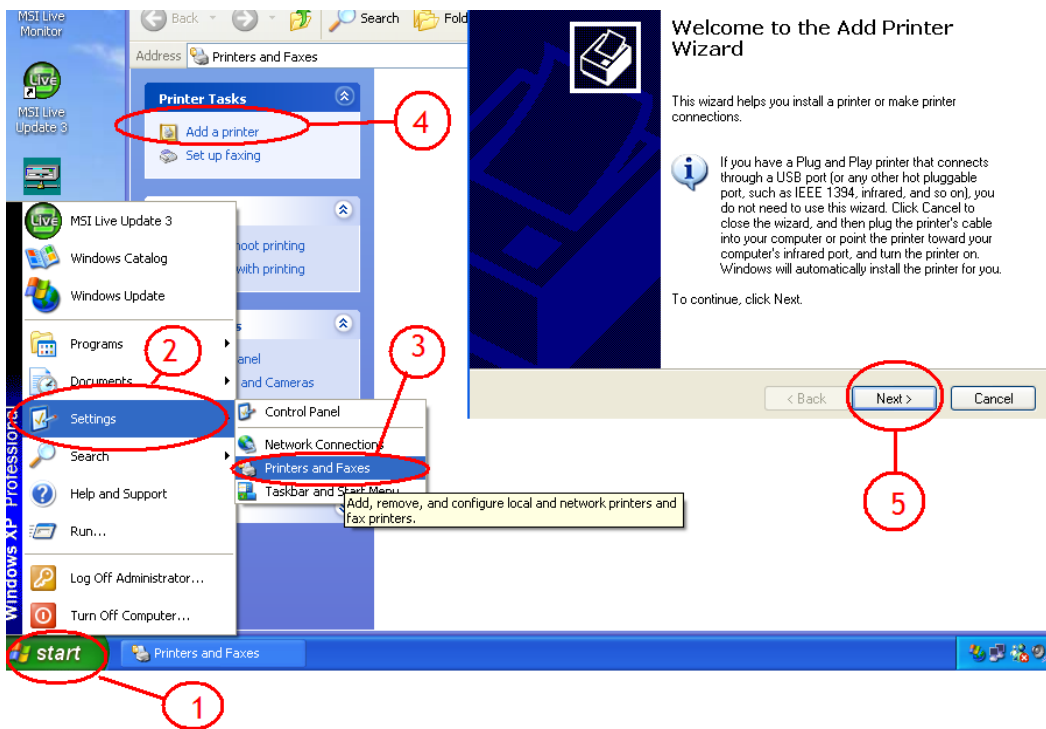


Inside the shared folder, you can access to your picture or music files, depending on which mode you are currently using. Select the files you would like to see or to listen, and start playback.

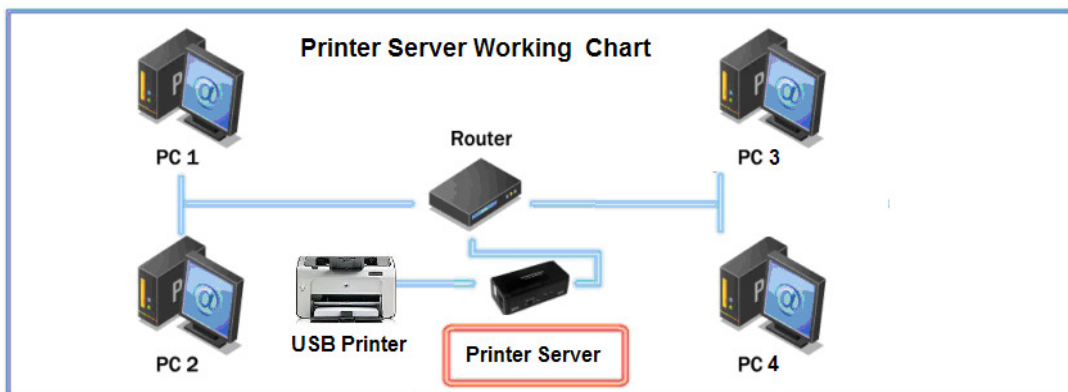


8.0 Printer Server

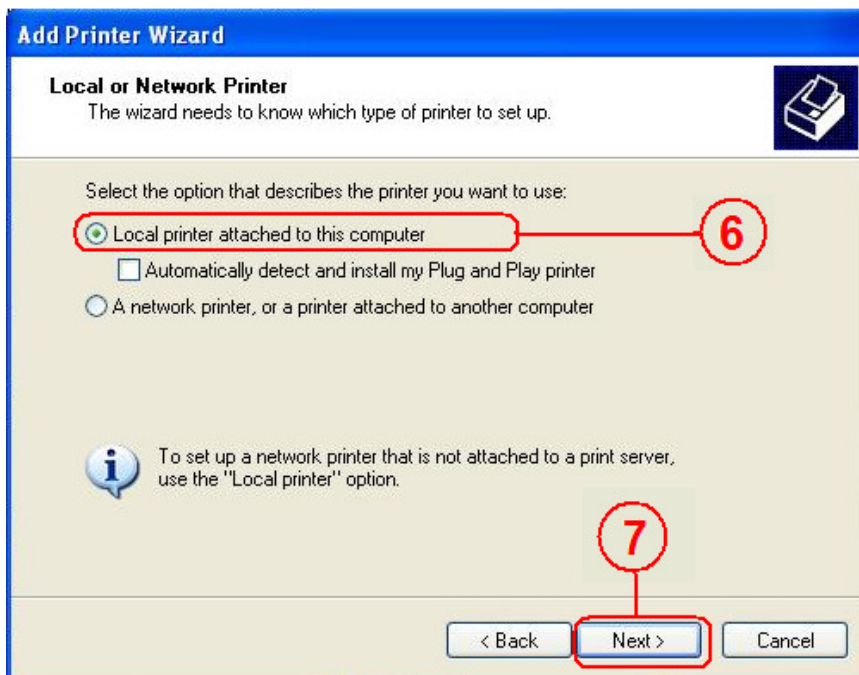
1. Install your Printer driver into your computer, (for example. if Epson PL-6200L Printer is connected to the NAS, you must install PL-6200L driver in to the computer first). After driver installation, please click "Start" → "Setting" → "Printer and Faxes" → "Add a printer"→ "Next".



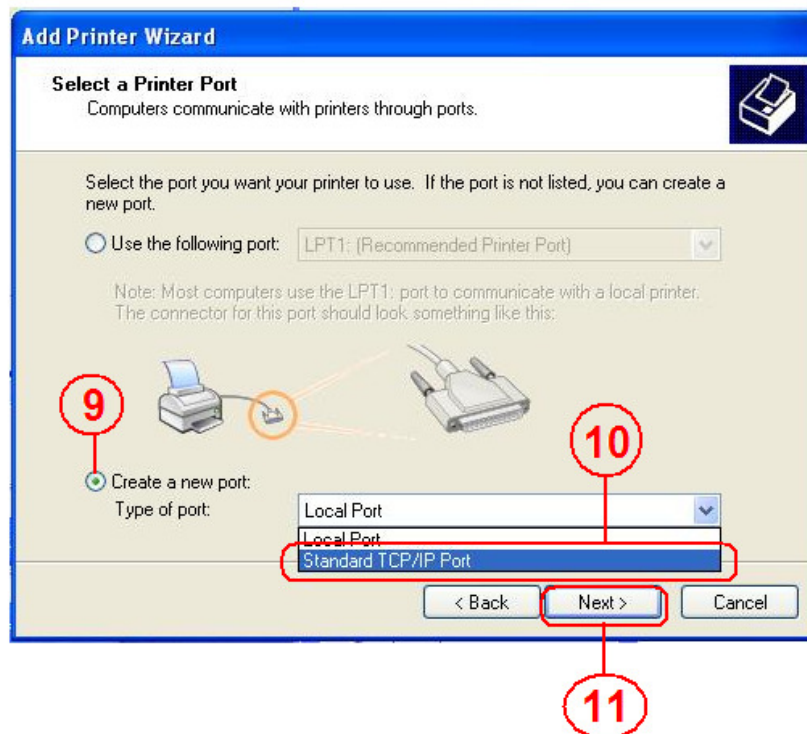
2. Connect the USB printer in to NAS Dongle, your network environment should look like diagram below:



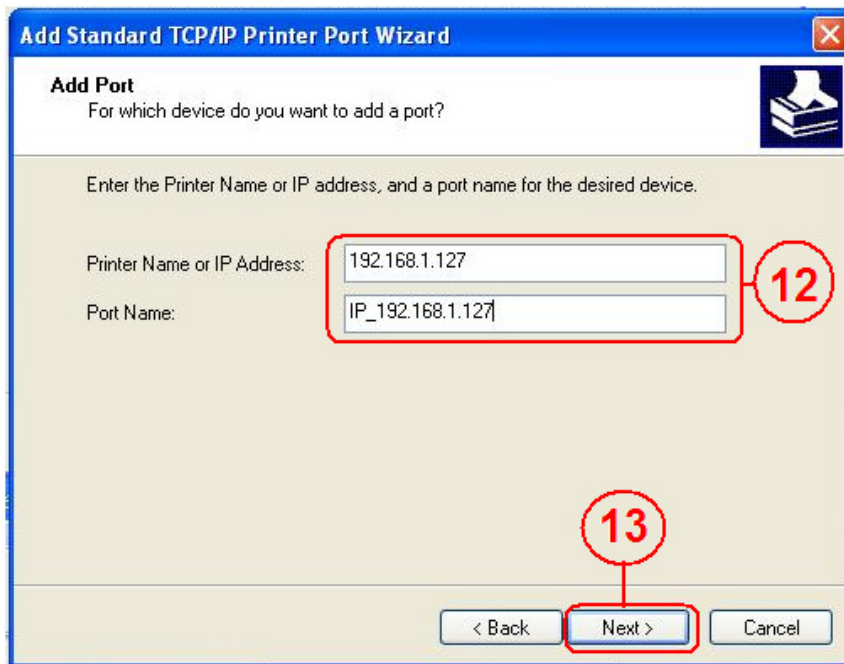
3. Select "Local printer" and click "next" to continue.



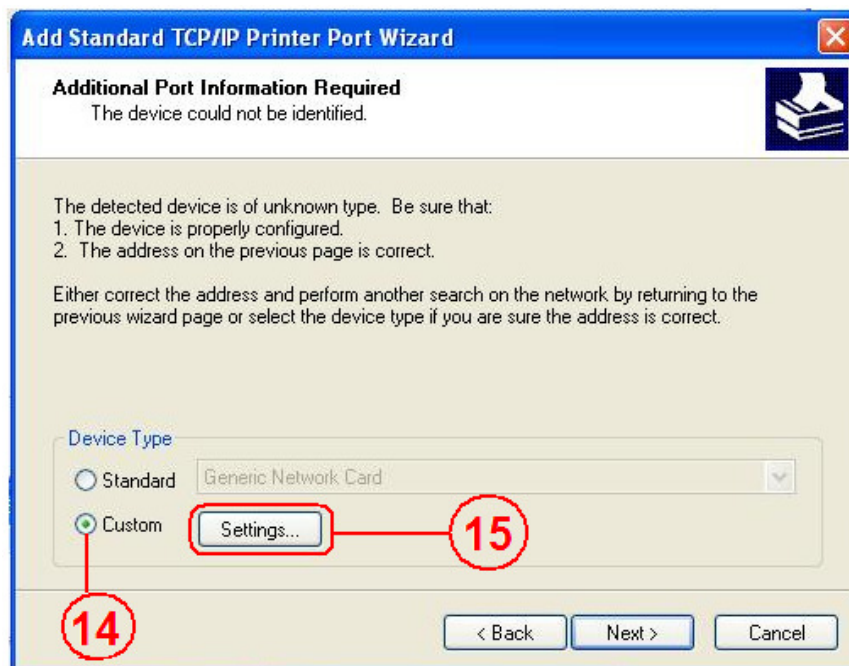
4. Select "Create a new port type of port:" , choose "Standard TCP/IP Port", and click "next" to continue.



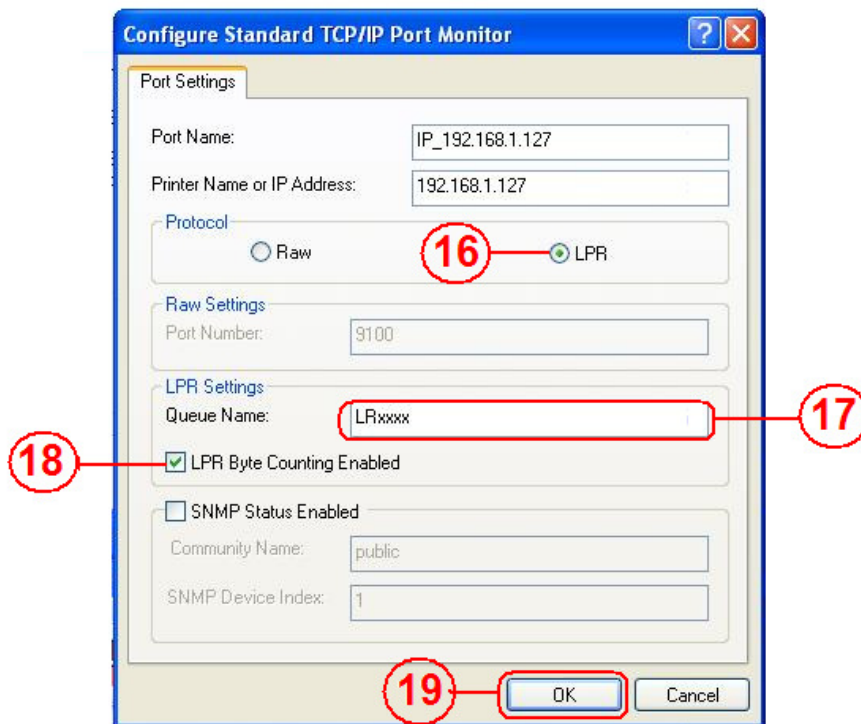
5. Enter the NAS Dongle IP address than click "next" to continue.



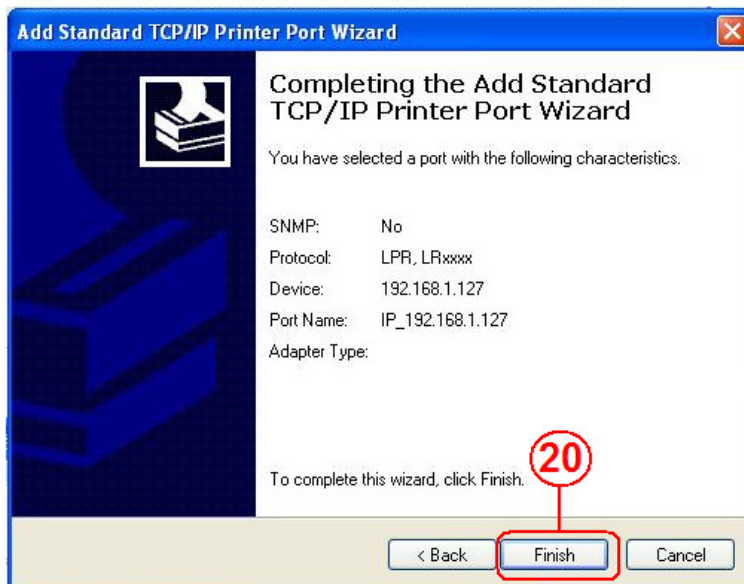
6. Select "Custom" and go to "setting".



7. Select **LPR** in protocol, and give a queue name eg:LRxxx; select LPR byte enable and click "OK" to finish the port setting.



8. Click "Finish" to complete TCP/IP printer setup.



9. Go to Pinter server page and check printer server status. If status shows "OK", the printer is setting up successfully.

	Printer Status	
Status	Status	OK
Identification	Manufacturer	EPSON
Date/Time	Model Number	480CX
IP Config	Languages	
Disk Utility		
Maintenance		
SMB Server		
FTP Server		
Media Server		
Printer Server		
BitTorrent		

Notes: The NAS Dongle Printer server does not support GDI/Host-based printers. For some Multi Function Printers (MFP); scanning functions might not be functional probably. Please contact Printer Manufacture for detail Specifications.

9.0 Bit Torrent server

NAS Dongle supports Bit torrent download independently without using PC resource.

Maximum of 4 bit torrent downloads can be running at the same time.

1. Select "**Bit torrent**" server, choose the "**Download Path**" you wish to use, then click "**Apply**" to save setting. (DO NOT change path setting while perform BT downloading, otherwise downloaded job will be missing).
2. Server port range can be chosen from 6881 to 65535. (6881 is the default setting)
3. Create a upload speed limit: 0=unlimited upload speed (4 KBps is the minimum speed), and click "**set**" to save setting.

Status

Identification

Date/Time

IP Config

Disk Utility

Maintenance

SMB Server

FTP Server

Media Server

BitTorrent

Bit Torrent Setup

System ID 52333238322d312e3138011223344555a9e881c

Number of the Downloads 0

Download Path

Server Port (Default:6881 Range:1025~65535)

Upload Limit (kB, Default:0 (unlimited))

Mail Notification

Upload Your Torrent File

Torrent File

Download Queue

1	WAITING	2008111.torrent
---	---------	-----------------

4. Click "**Browse**", select .torrent file, and upload to the download queue.

Note: The jobs listed in the Download Queue will be removed when NAS dongle is turned off or USB storage is removed.

NAS

Network Attached Storage

- Status
- Identification
- Date/Time
- IP Config
- Disk Utility
- Maintenance
- SMB Server
- FTP Server
- Media Server
- BitTorrent

Bit Torrent Setup

System ID: 52333238322d312e3138011223344555a9e881c

Number of the Downloads: 0

Download Path: Apply

Server Port: (Default:6881 Range:1025~65535) Set

Upload Limit: (kB, Default:0 (unlimited))

Mail Notification: Mail Setup

Upload Your Torrent File

Torrent File:

Download Queue

1	WAITING	1234xxxx.torrent
---	---------	------------------

9.1 Mail Notification

After the download is successful, an email will be send to designated email address. Click **"Mail setup"** , input SMTP server, recipient email, SMTP A/C, Password, and click **"Apply"** to save setting.

NAS

Network Attached Storage

- Status
- Identification
- Date/Time
- IP Config
- Disk Utility
- Maintenance
- SMB Server
- FTP Server
- Media Server
- BitTorrent

BitTorrent Mail Notification

Enable:

SMTP Server:

Sender:

Recipient: Apply

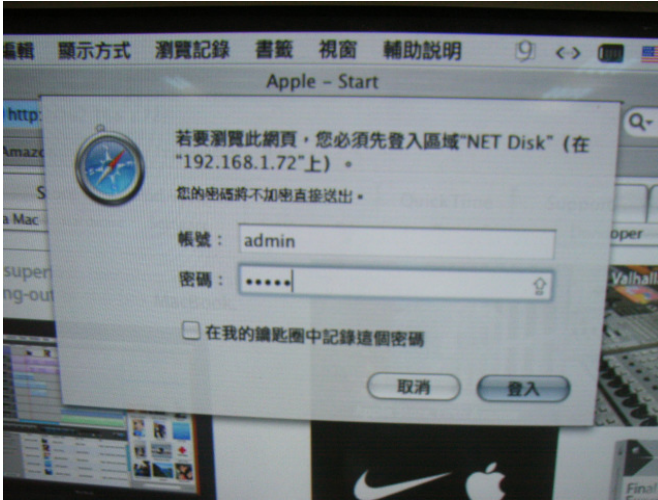
Mail Authentication:

User Name:

Password: Return

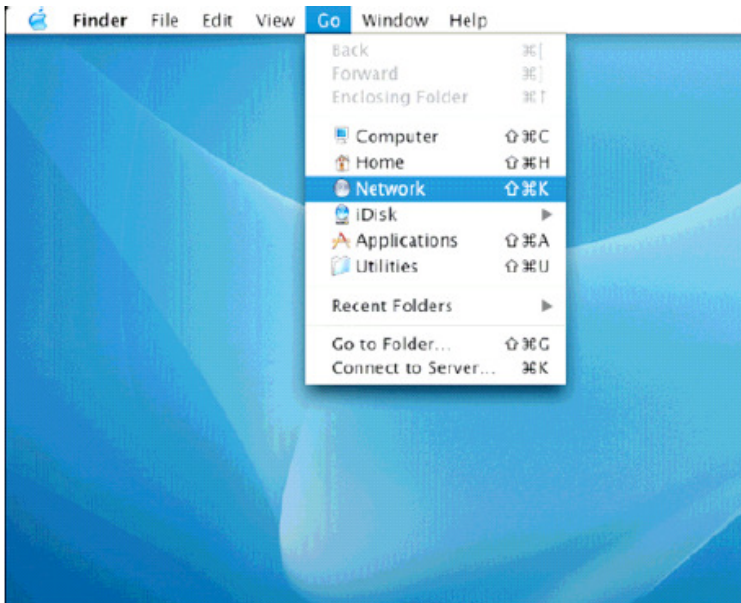
10.0 Mac installations (Mac 10.5.4 or above)

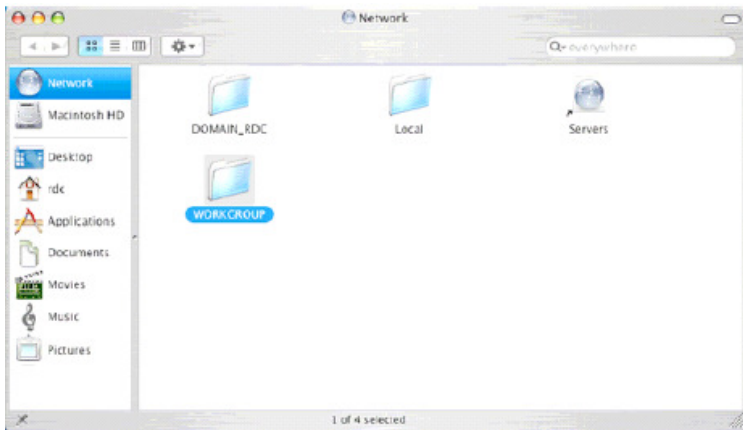
Open Mac browser "Safari" and key-in the host name of the NAS Dongle (for example, "strage-0000"). It will detect NAS Dongle automatically.



10.1 How to setup SAMBA in Mac OS X 10.5.4

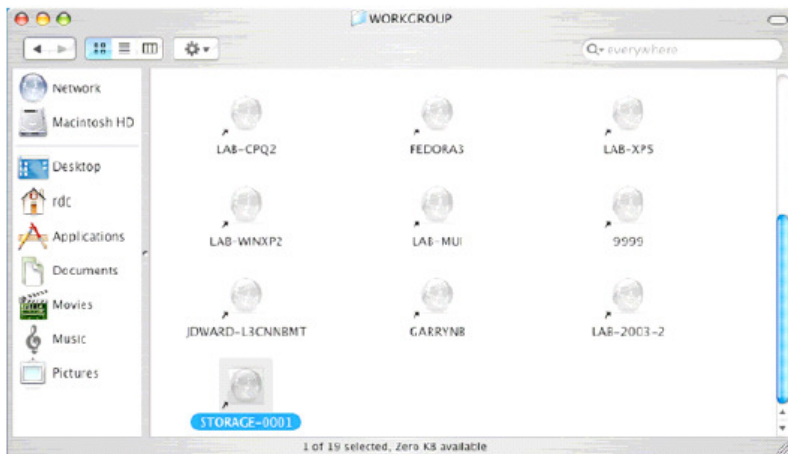
1. Click "Go" on the toolbar, and select "Network" as the screenshot shown below.



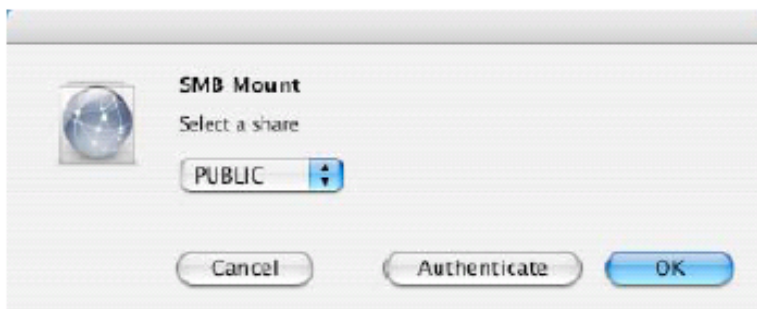


2. Double Click "**WORKGROUP**" (or the correct group name of NAS Dongle), you will find NAS Dongle "**STORAGE-xxxx**" (or the correct name of NAS Dongle).

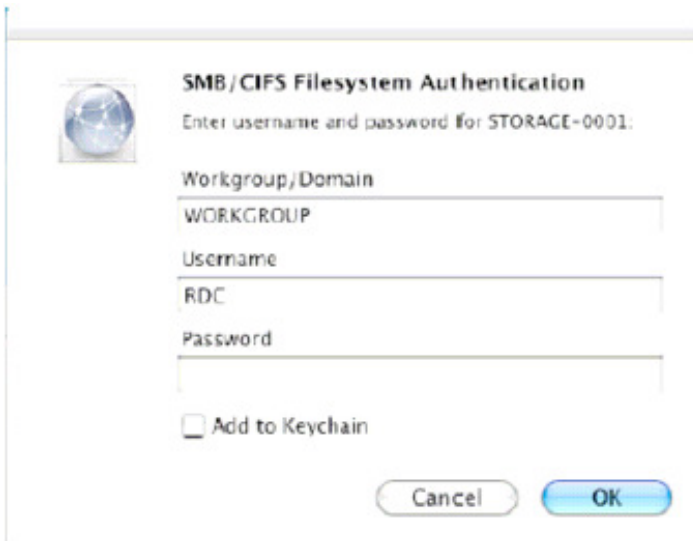
3. Click on the **storage-xxxx** (or the correct name of NAS Dongle).



4. Select the folder you wish to share, and click "**OK**" to share the folder

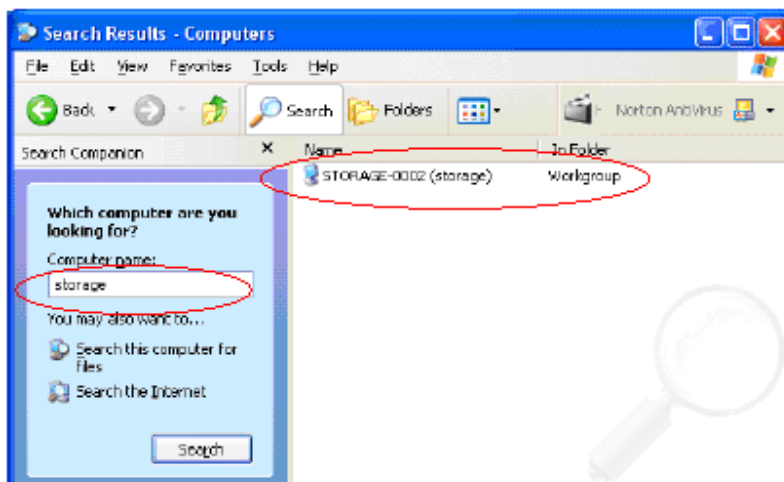


5. Click "**OK**" to show the folder in the Desktop.

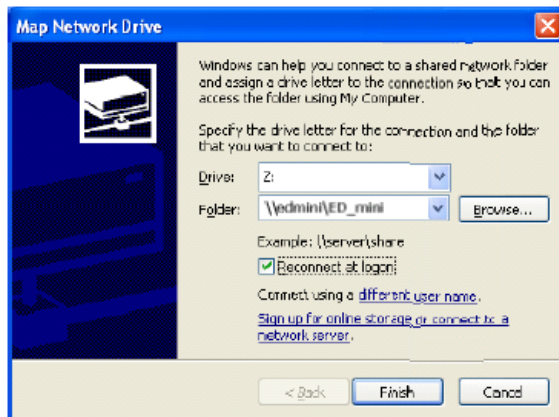
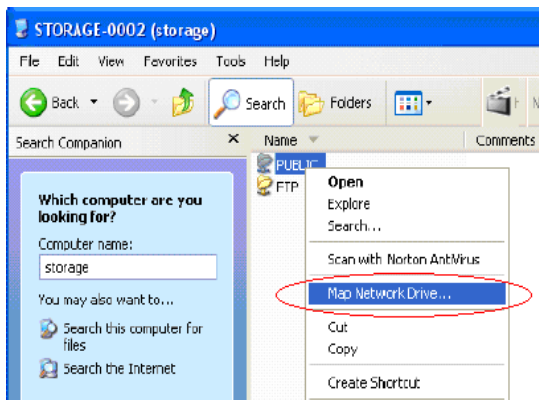


11.0 How to map your NAS Dongle as a Network Drive to your computer system (Showing NAS disk drive in network).

1. Press "Start" button on Windows desktop
2. Press "Search"
3. Select Folders
4. Select Computer or people
5. Select a computer on the network and a new window will appear.
6. Key in the host name, (For example "storage-xxxx") in the "Computer name" column and then press "Search" button. You will see the following window.



7. Point to the "Storage-xxxx", double click the mouse. Choose the folder you wish to map, click mouse on its right button and click "Map Network Drive".



Note: For faster connection and usability, we recommend that you map folders which you used constantly as network drives. This creates a direct access to the shared folders on NAS from My Computer.

12.0 Q&A

Q: What is NAS Dongle default IP?

A: The default IP address for NAS Dongle is 169.254.0.1 or enter "storage" in IE browser bar to search for it.



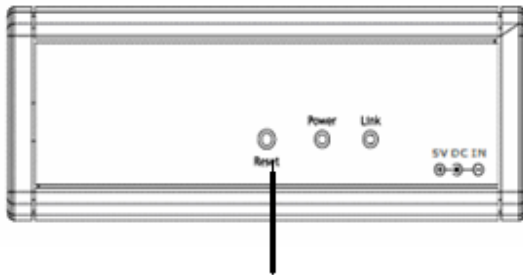
Q: What is NAS Dongle default login name and password?

A: Our NAS Dongle default Login name: "admin", default password: "admin".

Q: Forgot my login password, How should I do?

A1: By hardware:

1. Press the reset button and keep that position.
2. Unplug and reconnect the power.
3. Wait for 30 seconds, and then release the reset button.
4. NAS Dongle will go back to factory defaults.



Reset button

PS: Previous account setting and data will still remain in the NAS Dongle.

Q: Why can't I create/share folders in SMB or FTP server?

A: To avoid languages support issue, you are suggested to create/share folders with English characters only.

Q: Why can't I upload the files via LAN connection or got disconnected?

A1: Please make sure the networking is connected properly and you have the access right (read & write) for the folders.

Q: How to setup NAS Dongle to be in daylight saving time?

A: NAS Dongle does not support Daylight saving time setting.

Q: Why WinXP can not enter SMB folder with password via NAS Dongle?

A: Please update Win XP to SP2 or above. After update, please make sure if you have installed Norton Internet Security, if you do, please check with Norton service center.

Q: What Operating Systems does NAS Dongle support?

A: NAS Dongle supports Microsoft Windows 2000 / XP / Vista and Apple Macintosh OS 10.5.4 above.

Q: How do I access NAS Dongle via the Internet?

A: If your NAS Dongle is using a fixed public IP, please perform the following steps.

- Enter the management web base of NAS Dongle, and go to the FTP Server page to enable FTP Status.
- Create user account and limits of authority.
- Open Microsoft Internet Explorer or other FTP client software (recommended), and enter ftp:// NAS Dongle IP in the IP address field.

Q: Why FTP can not link to NAS Dongle or show link time out when using IE?

A: Due to IE FTP is not compatible with some Routers, you are suggested to use FTP client software to start with. If you would like to use IE FTP to link to NAS Dongle, please refer to following steps:

- Please open port 21 and 20 on Router and link to NAS Dongle.
- Open IE > Tool > Internet Options>Advance
- Click "Enable folder view for FTP site" and click "OK"

Q: Why my FTP client software can not link to NAS Dongle or fail during file transfer??

A: Due to software design, it's possible that certain FTP software is not compatible with NAS Dongle. NAS dongle is tested with most of popular FTP software such as CuteFTP or SyncQuick FTP.

Q: What is the limitation of user to login FTP and Samba server?

A:

Samba Server	User Level Access(maximum create 16 user account, 16 folder share by one account)
FTP Server	maximum create 16 user account,16 folder share by one account
Maximum User Login	FTP 8 User/Samba 8 User (Total 64 TCP connection at the same time)

Q: Any limitations for NAS Dongle file name length?

A: The limitation of length of file folder is 12 bytes.

Q: What can DHCP do as well with NAS Dongle?

A: You can setup NAS Dongle as a DHCP server if there is no any other DHCP Server exists in your local network. Otherwise, NAS Dongle will automatically turn off its DHCP server function and become a DHCP client. For example, if you have installed a router with built-in (activate) DHCP Server, NAS Dongle will automatically setup itself as DHCP client.